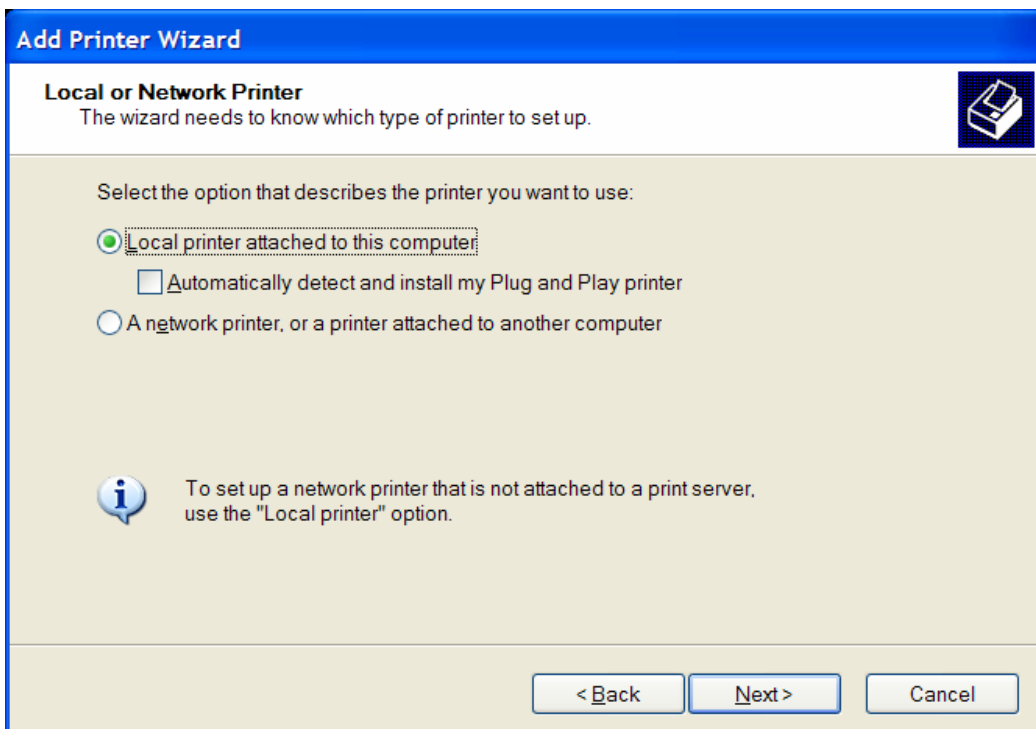
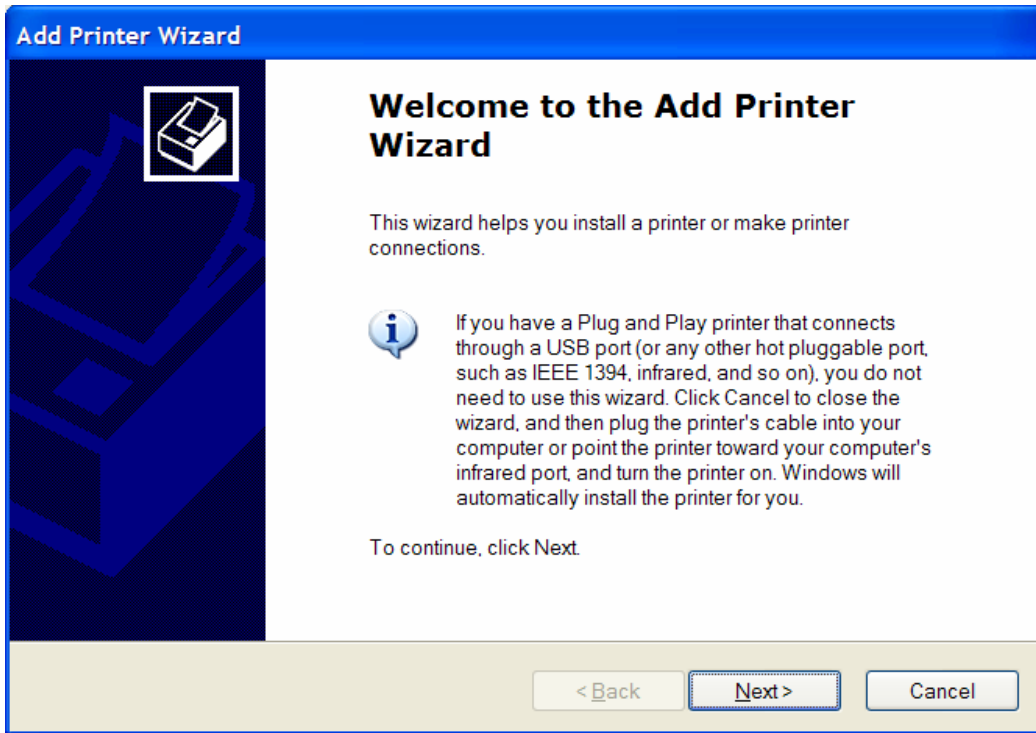
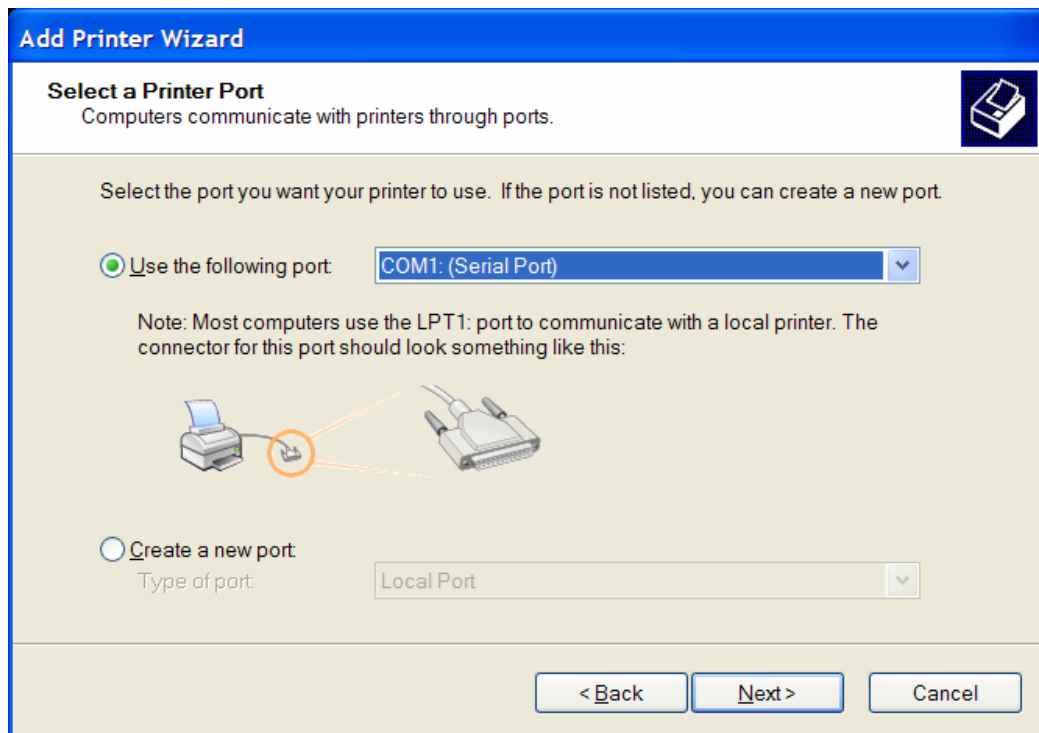


POS printer Setup

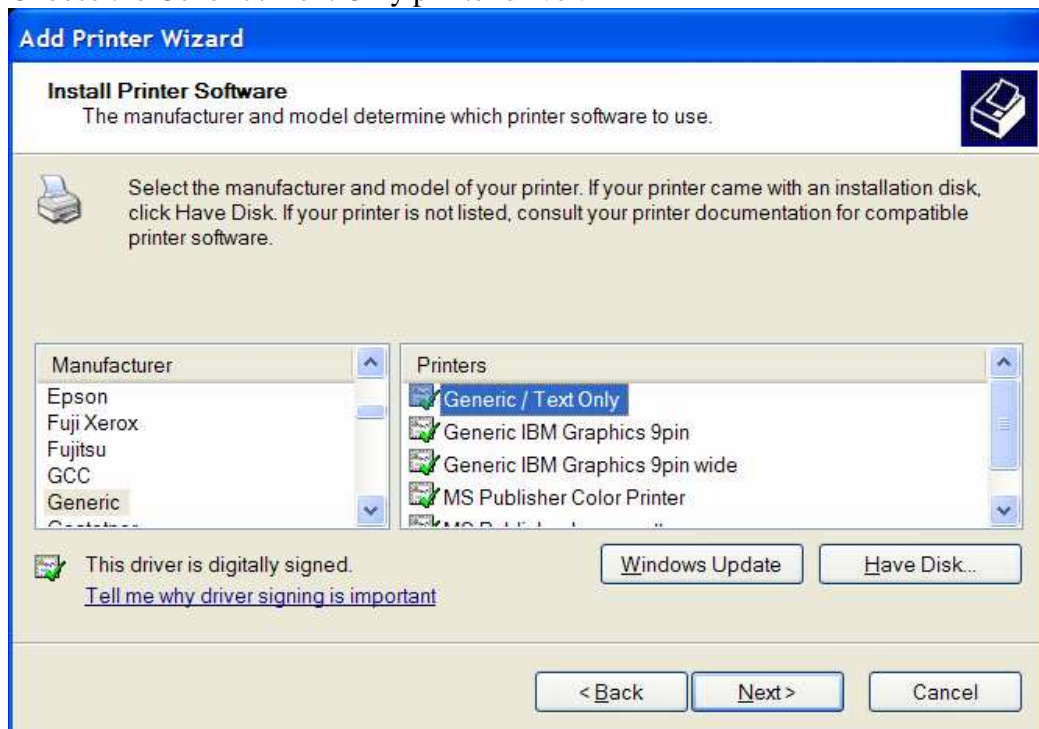
Use the Windows Printers and Faxes screen to add a new printer.



Choose the printer port the printer is connected to, it could be LPT1, Com1 or USB.



Choose the Generic / Text Only printer driver.



Once done, Ask it to print a test page by pressing on PRINT TEST PAGE Button, if it prints, you can now go to Retail Man and setup the printer there. **Make sure not to make the POS printer as your default printer**, if you do, the reports will not be printed properly, instead you will get only half or the report page showing, you must use a standard printer (either Laser or inkjet as you default Windows printer)

Go to MAINTENANCE SYSTEM SETUP > HARDWARE and enter the following:

The screenshot shows the 'System Setup' window with the 'Hardware' tab selected. The window has a blue header and a tabbed interface with tabs for 'Company', 'General', 'Sales', 'Stock', 'Purchase', 'P.O.S', and 'Hardware'. The 'Hardware' tab is active, displaying several configuration sections:

- Screen Resolution:** A dropdown menu set to '800x600'.
- POS Printer:** A section with several fields:
 - POS Printer: 'EPSON T88II' (dropdown)
 - Windows Driver: 'Generic / Text Only' (dropdown)
 - Double Width On: 'chr(27)+chr(33)+chr(32)
 - Double Width Off: 'chr(27)+chr(33)+chr(0)
 - Auto Cutter On: 'chr(29)+chr(86)+chr(01)
 - Graphics Support:
- Customer Pole Display:** A section with several fields:
 - Customer Pole Display:
 - Pole Display: 'Pole Display' (dropdown)
 - Home Code: 'chr(11)
 - CR Key Code: 'chr(13)
 - Welcome Text: (empty field)
 - Currency Symbol: '156' (text input)
- Cash Drawer:** A section with two fields:
 - Cash Drawer:
 - Cash Drawer Connected to:

Notice to choose the Windows Driver as the driver you created above. Then save, this will now use the Epson Pos printer as your receipt printer.