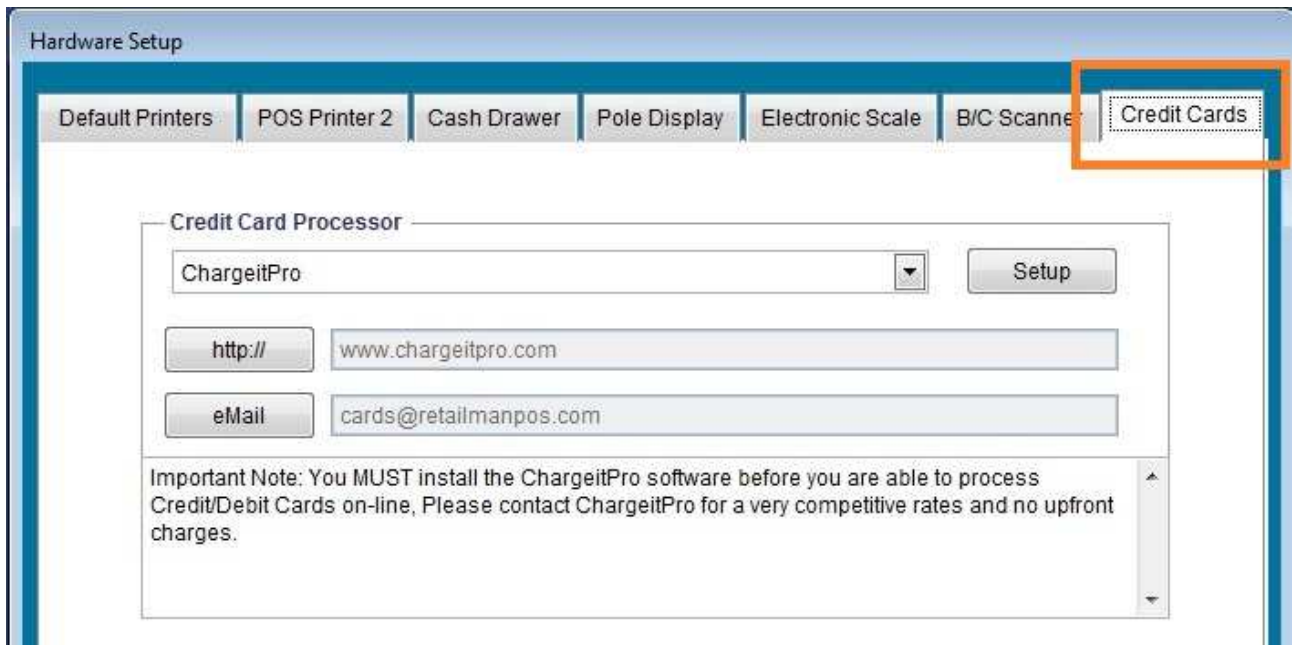


Setting up Retailman POS to work with Credit Cards

To setup Rman to work with credit cards, you will need to do the following:

1 – Go to Maintenance > Hardware Setup > Credit Card Tab and choose a credit card processor from the drop down list then save



The screenshot shows the 'Hardware Setup' window with the 'Credit Cards' tab selected. The 'Credit Card Processor' dropdown menu is set to 'ChargeitPro'. Below this, there are input fields for 'http://' (www.chargeitpro.com) and 'eMail' (cards@retailmanpos.com). A 'Setup' button is located to the right of the processor dropdown. An important note is displayed at the bottom of the form.

Hardware Setup

Default Printers | POS Printer 2 | Cash Drawer | Pole Display | Electronic Scale | B/C Scanner | **Credit Cards**

Credit Card Processor

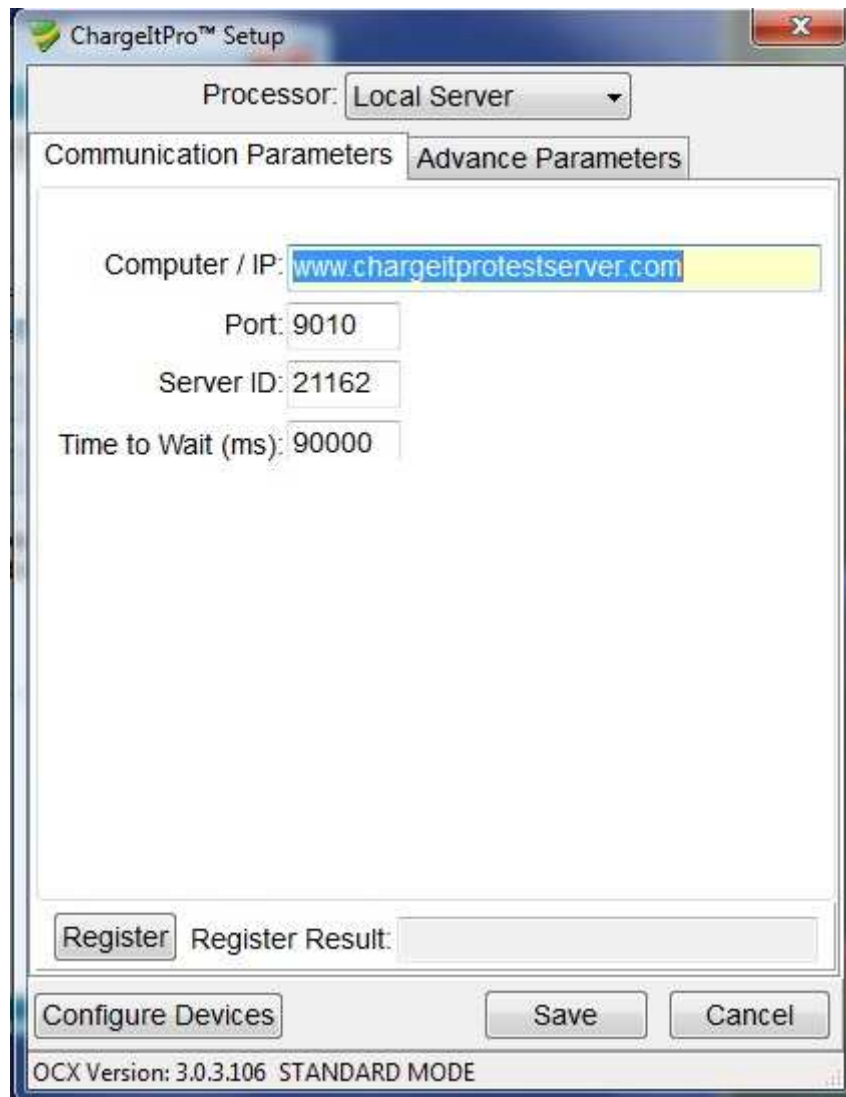
ChargeitPro [v] Setup

http:// www.chargeitpro.com

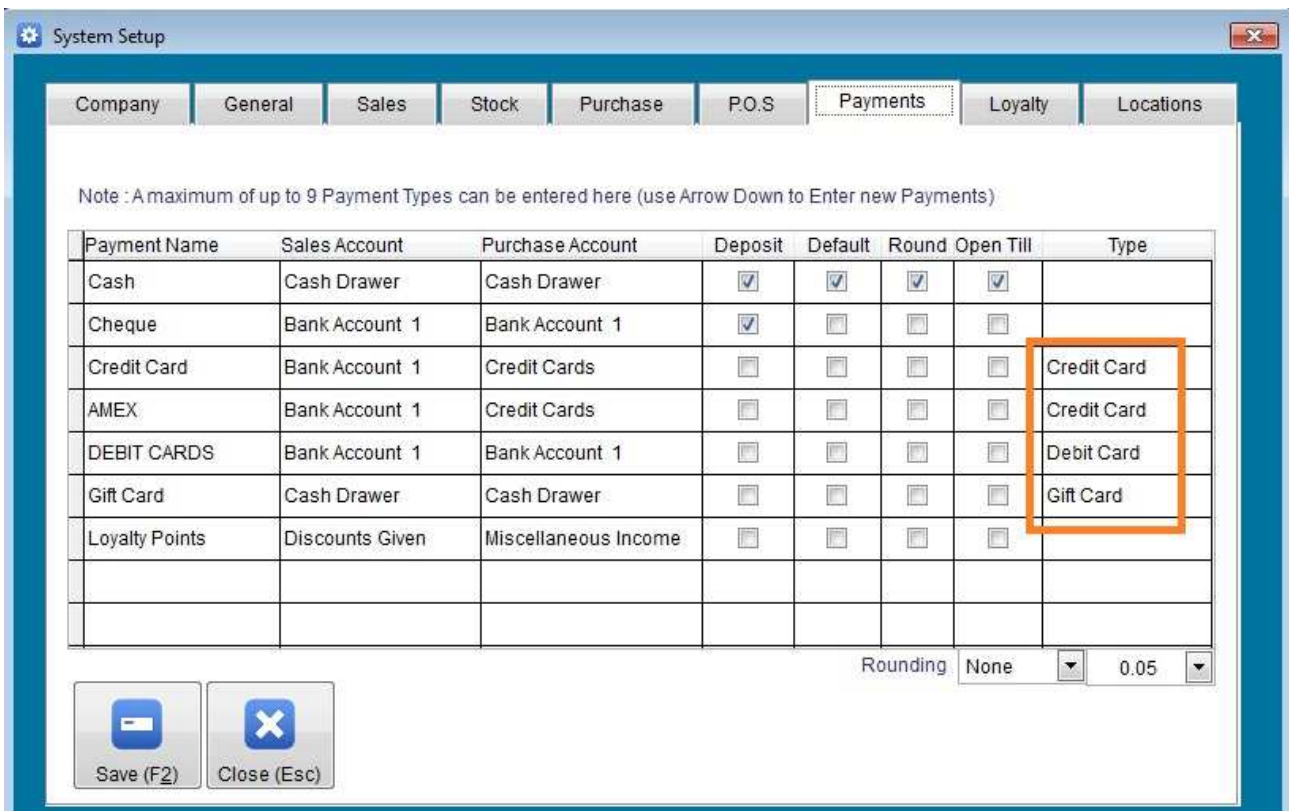
eMail cards@retailmanpos.com

Important Note: You MUST install the ChargeitPro software before you are able to process Credit/Debit Cards on-line, Please contact ChargeitPro for a very competitive rates and no upfront charges.

2 – Click on the Setup Button next to the Credit Card Process Name on the same screen to setup the proper parameters for that card processor, each processor has their own setup screens, you will need contact them to setup an account with them and they will tell you how to setup their screens.



3 – Go to Maintenance > System Setup > Payments and choose the card types from the drop down list (Credit Card, Debit Card or Gift Card) then save



Once saved, you can now start processing credit cards, so from the pos payment screen, if the total amount is paid by credit card, just click the credit card button and the system will place the total amount in the credit card field and open the credit card processor screen to allow you to scan the credit card, after this save a usual.

